

# ONE BRICK STUDIO

Let's build your future brick by brick  
by blending your dreams.



# TABLE OF CONTENTS

01

**ABOUT US**

02

**OUR SERVICES**

03

**THE PLAN**

04

**FEATURES**

05

**FINANCIALS**

06

**FUTURE PLAN**



# 01

## ABOUT US



I, Nihil Antony, Founder & Director of **One Brick Studio**, have designed and developed over 200 architectural turnkey projects with a dynamic team of 15+ young professionals and 40 skilled employees.



2020

Started as a Single young Champ who is just a fresher.



2021

Created One Brick Studio and reached 10+ Projects.



2022

Tied up with various brands for their Brand interior works.



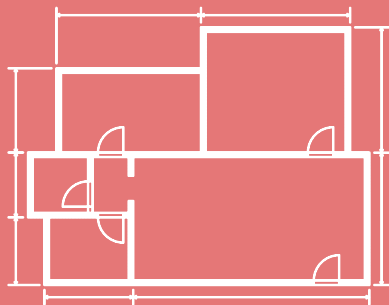
2023

Established as a renowned company among our clients and Known Circle.



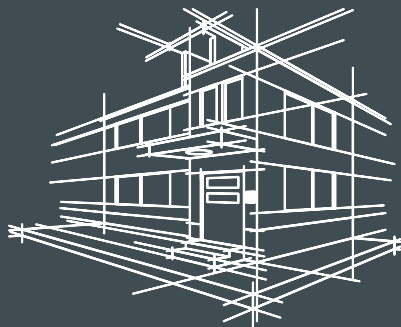
2024

Completed 200+ Turnkey projects and Reached 3.5 Cr in H1 2024.



## Planning

A plan is the fundamental building block of any structure.



## Architecture

"Architecture is the cornerstone of every great building."

# 02

## OUR SERVICES



## DESIGN

We have completed  
2000+ Projects.



## CONSTRUCTION

We have completed  
30 Projects.



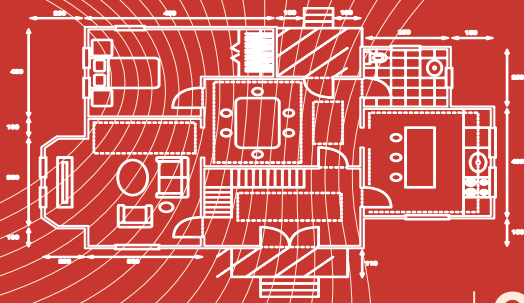
## INTERIOR

We have completed  
190+ Projects



## LANDSCAPE

We have completed 8  
Projects



## Land & Plan

We acquire a DTCP approved land then Design & develop the project.



## Construction

The Complete Construction and Finishing will take around 6 to 8 Months



## Promotion

Our Promote team will start working from day one of our project and will get clients for our project.



## Delivery

We will deliver the project to the client with in a year of project started.



# 04

## FEATURES



3 Years  
Maintenance



Lifetime Service  
and support



Semi Furnished



Sustainable  
architecture



Natural Lighting



Landscape



Blend with  
Tradition



Modernised  
Interior



Modular Kitchen



Network & CCTV  
Infrastructure

Live in our beautifully crafted homes, where tradition meets modern design through a seamless blend of architectural styles.



Si. No.:	Description	Area (sq.ft)	Expense Per sq.ft.	Expenses	Revenue per Sq.ft.	Total Revenue
1	Realestate	1307	2300	3006100	2760	3607320
2	Civil Cost	2000	1700	3400000	3000	6000000
3	Interior Cost	2000	300	600000		
4	Promotions			350305		
Total				7356405		9607320
Over all Profit						2250915
Profit Percentage						30.60%

Investment amount	Overall Profit	Dividend 50% on Profit	Percentage to Principal amount
7356405	2250915	1125457.5	15.30%
(Note : The project is estimated to Complete with in a year.)			

**Note : Our Current Yearly Turnover is around 5 Crore.**





## PLAN 1

Developing chain of projects



## PLAN 3

Architectural installations for brands



## PLAN 2

World Class amenities projects



## PLAN 4

Gated community Villas

# THANKS!

## Do you have any questions?

